

**ITEM 27. WORKS ZONE – EBSWORTH STREET ZETLAND – SOUTH OF
TWEED PLACE**

TRIM RECORD NO: 2015/588523

RECOMMENDATION

It is recommended that the Committee endorse the following reallocation of the kerb space on the eastern side of Ebsworth Street, Zetland, south of Tweed Place:

- (A) Between the points 31.6 metres and 40.3 metres (one car space), and 64.3 metres and 82 metres (three car spaces), as “Works Zone 7.30am-5.30pm Mon-Fri, 7.30am-3:30pm Sat, 2P Ticket 5.30pm-10pm Mon-Fri, 3.30pm-10pm Sat, 8am-10pm Sun”; and
- (B) Between the points 40.3 metres and 52.5 metres (two car spaces) as “Works Zone 7.30am-5.30pm Mon-Fri, 7.30am-3:30pm Sat, 2P Ticket 5.30pm-10pm Mon-Fri, 3.30pm-10pm Sat, 8am-10pm Sun”, Motor Bike Parking Other Times”.

Subject to the following conditions:

- (C) Dedication of Ebsworth Street, Zetland to the City of Sydney Council.
- (D) The Applicant must reinstate the garden/tree bays after completion of works.
- (E) The Applicant must comply with the Works Zone conditions as stipulated in Schedule D of this Agenda.
- (F) The Applicant must obtain separate approval from the City’s Tree Management and Green Square Infrastructure Teams.
- (G) The Applicant is not permitted to swing or hoist goods from a Works Zone across or over any part of a public road by means of a lift, hoist or crane unless a separate approval has been obtained from the City’s Building Approvals Unit under Section 68 of the Local Government Act 1993.
- (H) The Applicant must notify local residents of the Works Zone at least seven days prior to installation.
- (I) The Applicant must provide a telephone number of the Site Manager.

DECISION

BACKGROUND

MIRVAC Green Square Pty Ltd has applied for a 20.9 metre long and a 17.7 metre long Works Zone in Ebsworth Street, Zetland.

The Works Zone is to facilitate construction works at Site 16 Ebsworth Street for a period of approximately 52 weeks.

COMMENTS

The kerb space on the eastern side of Ebsworth Street, Zetland south of Tweed Place, where the Works Zones are proposed, is allocated as "2P Ticket 8am-10pm" and "Motor Bike Parking".

The Works Zones are intended to operate from 7.30am to 5.30pm on Monday to Friday and 7.30am to 3.30pm on Saturday in accordance with the Development Consent Conditions.

The development site has no provision for off-street parking for large trucks and as the approved development takes up the entire site, the Developer is unable to carry out construction unless a Works Zone is provided directly in front of the site. The street is wide enough to allow the Works Zone to be installed without affecting traffic flow or property access.

The Applicant must obtain separate approval from the City's Tree Management Team if loading or unloading from the Works Zone will impact on adjacent trees.

The proposed work zones will include the removal of garden/tree bays to allow larger vehicles to load and unload. The garden/tree bays will be reinstated by the Applicant after completion of works.

CONSULTATION

The Applicant must notify adjacent properties at least seven days prior to the implementation of the Works Zone.

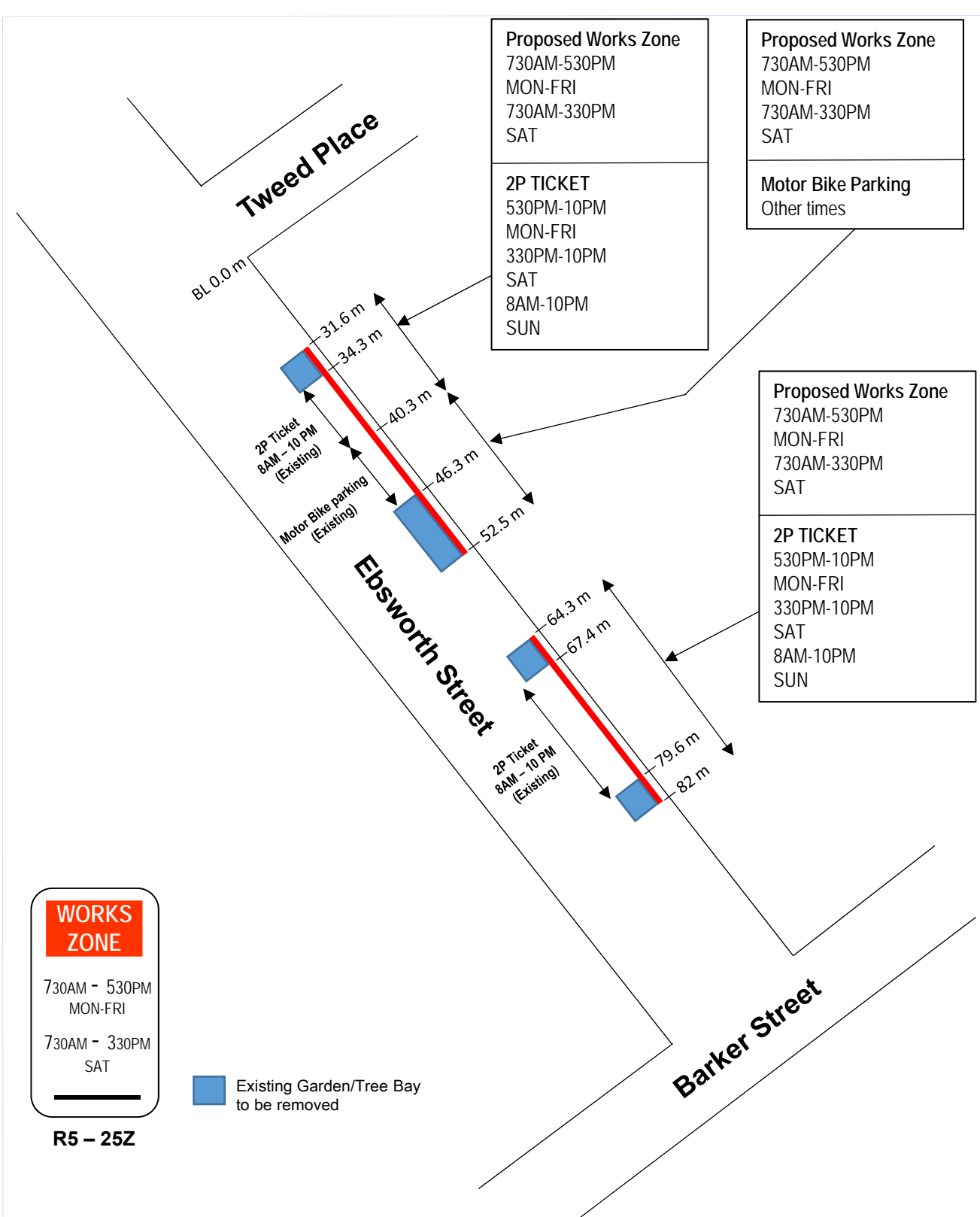
FINANCIAL

All costs associated with the Works Zone will be borne by the Applicant.

ATTACHMENTS

Works Zone – Ebsworth Street Zetland – South of Tweed Place

Ganesh Vengadasalam, Engineering Traffic Officer



Proposed Works Zone
 730AM-530PM
 MON-FRI
 730AM-330PM
 SAT

2P TICKET
 530PM-10PM
 MON-FRI
 330PM-10PM
 SAT
 8AM-10PM
 SUN

Proposed Works Zone
 730AM-530PM
 MON-FRI
 730AM-330PM
 SAT

Motor Bike Parking
 Other times

Proposed Works Zone
 730AM-530PM
 MON-FRI
 730AM-330PM
 SAT

2P TICKET
 530PM-10PM
 MON-FRI
 330PM-10PM
 SAT
 8AM-10PM
 SUN

WORKS ZONE

730AM - 530PM
 MON-FRI

730AM - 330PM
 SAT

Existing Garden/Tree Bay to be removed

R5 - 25Z

NOT TO SCALE



PROPOSAL

**WORKS ZONE
 EBSWORTH STREET, ZETLAND
 (SOUTH OF TWEED PLACE)**



